

PRODUCT CARD

We offer superior customer service, competitive pricing, and lead times that exceed expectations. Since 1977, we remain the leading global manufacturer that provides standard and custom fabricated solutions to a diverse customer base.

- Custom and OEM fabricated products
- 40,000 square foot manufacturing facility
- In-house cleaning service for industrial gases
- Average production of 12,000 assemblies per month
- Extensive inventory of raw materials and stock products
- All products fabricated at our facility are 100% leak tested
- Knowledgeable and responsive customer service and sales team
- Third party verifications UL Classified, UL Listed, and CRN approved

PUMP CONNECTORS AND REDUCING METAL HOSE ASSEMBLIES



In-Stock, Ready to Ship!

Sizes: ¼" I.D. through 24" I.D.

End Fittings: Weld, Sweat, Flange, Groove, and Male NPT

Material: Stainless Steel Hose and Braid, or Bronze Hose and Braid

* Custom sizes available

SEISMIC V AND U CONNECTORS

Sizes: Standard ½" I.D. through 18" I.D.

End Fittings: Weld, Flange, Groove, Sweat, Male NPT

Material: Stainless Steel Hose and Braid, or Bronze Hose and Braid

* Custom sizes and fittings available



Ports and hangers available



RUBBER EXPANSION JOINTS

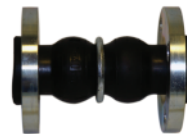
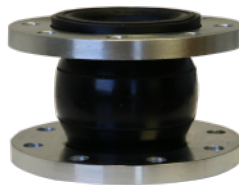
Sizes: ¾" I.D. through 30" I.D.

Common Elastomers Include:

Neoprene, EPDM, Nitrile and Chlorobutyl

- Temperatures 20°F to 250°F
- Molded and Spool Type

* Custom sizes and materials available



METAL EXPANSION JOINTS

Sizes: 2" I.D. through 36" I.D.

End Fittings: Weld, Floating Flanges, Specialty and Custom Flanges available

Material: 304, 321, and 316 Stainless Steel

Liners and Covers are available

* Custom sizes and materials available



PRODUCT CARD

INDUSTRIAL

SOLUTIONS FOR:

- Seismic Movement
- Vibration Isolation
- High Temperature
- Corrosive Media
- Thermal Growth
- High Pressure

* Custom sizes available

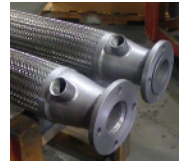


TCH has a complete line of standard and custom fabricated industrial products, which are designed to meet our customer's needs.



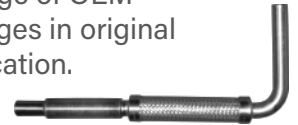
TCH OFFERS A VARIETY OF HOSES:

- Steam Jacketed & Traced Hose
- Dry Bulk Conveying Hose
- Cryogenic and LPG Hose
- Unloading Hose
- Interlock Hose
- PTFE Hose



OEM

We fabricate high quality flexible metal hose and expansion joint solutions for a wide range of OEM industries. Our team of experienced welders and representatives understand the challenges in original equipment manufacturing and our custom solutions are designed for your specific application.



LPG / NH3

LPG assemblies are constructed of stainless steel corrugated metal hose and are double braided.

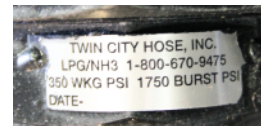
Sizes: 1/4" I.D. through 3" I.D.

End Fittings:

3000# forged steel female NPT union
Extra heavy seamless male NPT fitting



* Shrink wrap cover available



Each LPG assembly is tagged as:

- LPG & NH3
- 350 WPSI 1750 BPSI
- Date of MFG

CRYOGENIC / CNG / LNG / PTFE HOSE

Sizes: 1/4" I.D. through 4" I.D.

- All stainless steel construction
- Custom assemblies are available
- Full or partial armor guard is available
- A variety of end fittings are available to fit your application needs



In-house O2 Clean Room



Sizes: 1/4" I.D. through 2" I.D.

End Fittings: Male Pipe, Female JIC, SS Flange Retaining Insert

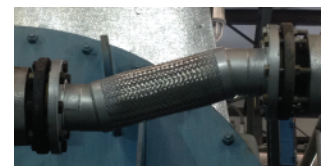
Material: PTFE Inner-Core Smooth Bore or Convolute with Stainless Steel Braid



CUSTOM FABRICATION

TCH specializes in servicing customers who need custom fabricated products for their complicated projects. Fabricated support skids, manifolds, flexible metal hose and expansion joints are just a sampling of the types of products that we can build.

- Product cleaning is available
- Large inventory of materials
- Fabrications and welding completed at TCH
- All custom parts and products are 100% leak tested



POWER GENERATION PRODUCTS

We can fabricate standard or custom exhaust assemblies. We also supply exhaust components for all major Gen-Set Manufacturers and re-packagers around the world.

- Exhaust Manifolds
- Coolant Connectors
- Exhaust Connectors
- Exhaust Accessories
- Custom Tube Extensions
- Bulk Exhaust Hose and Flanges
- Exhaust Bellow and Expansion Joints



* Custom sizes available



PRODUCT CARD

AIR COMPRESSOR CONNECTORS

Sizes: ½" I.D. through 3" I.D.

End Fittings: Carbon Steel Male NPT, Hex Male NPT, Female Union, 150# Flange

Material: Stainless Steel Hose and Braid

* Custom sizes available

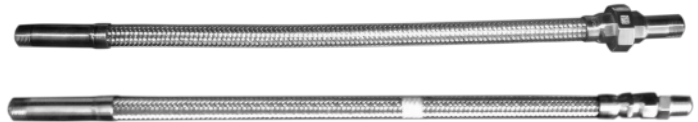


METAL HEAT PUMP HOSE

Sizes: ½" I.D. through 2" I.D.

End Fittings: Male NPT, Female Union, Hex Male NPT, Female JIC

Material: Stainless Steel Hose and Braid with Carbon Steel or Stainless Steel End Fittings



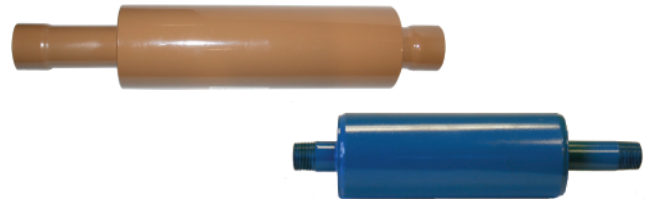
EXPANSION COMPENSATORS

Sizes: ¾" I.D. through 4" I.D.

End Fittings: Groove, Weld, Male NPT, Flange, Sweat

Movement: 1 ¾" Compression and ¼" Extension

Material: Multi-ply Series 300 Stainless Steel Bellows Carbon Steel Shroud



EXTERNALLY PRESSURIZED EXPANSION JOINTS

Sizes: 2" I.D. through 24" I.D.

End Fittings: Groove, Weld, Flange

Movement: 4" Compression and ¾" Extension (short) or 8" Compression and 1 ½" Extension (long)

Material: Multi-ply T-304 Stainless Steel Bellows Carbon Steel Shroud

* Dual and custom movements available



Available Design Pressures: 150# and 300#

PIPE GUIDES / MULTI-PLY BELLOW PUMP CONNECTORS

Sizes: ½" I.D. through 24" I.D.

Movement: Axial movement 4", 6" and 8"

Material: Constructed of Carbon Steel

Types: Spider, Insulated, PTFE Slide, Baseboard



Sizes: 2" I.D. through 16" I.D.

End Fittings: 150# Carbon Steel Flanges

Material: Constructed with Series 300 Stainless Steel Multi-Ply Bellows



ACCESSORY ADAPTERS / PTFE EXPANSION JOINTS

Sizes: 2 ½" I.D. through 12" I.D.

End Fittings: Flange, Male NPT, Weld, and Groove

Material: Carbon Steel and Stainless Steel Straight and Reducing

* Custom sizes and configurations available

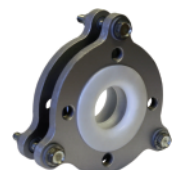


Sizes: 1" I.D. through 12" I.D.

Styles: 2, 3, and 5

Convolutions

Material: Molded PTFE



APPROVALS AND CERTIFICATIONS

UL CLASSIFIED LEAD-FREE FLEX™

Sizes: ½" I.D. through 12" I.D.

End Fittings: Weld, Sweat, Flange, Groove, and Male NPT available in Carbon Steel, Stainless Steel and Copper

Material: Stainless Steel Hose and Braid, or Bronze Hose and Braid



Movement Available:
2", 3", 4", and 6"



UL LISTED FIRE SAFEFLEX™ CONNECTORS

Seismic V and U Connector Sizes:

½" I.D. through 4" I.D. with Male NPT Fittings
2" through 10" with Grooved or RFSO Flange Fittings

Movement: Up to 24" of Motion

Material: Stainless Steel Hose and Braid, Carbon Steel or Stainless Steel End Fittings



Hangers available



CRN (CANADA) PRODUCTS

Sizes: ¼" I.D. through 12" I.D.

Movement: Up to 10" of movement for V and U flex connectors

End Fittings: Weld, Sweat, RFSO Flange, and Male NPT

OAL: Straight assemblies any overall length

Material: Bronze Hose and Braid with Copper End Fittings or Stainless Steel Hose and Braid with Carbon Steel End Fittings



CRN Approved for:
Manitoba, Ontario, Alberta, British Columbia, Québec and Saskatchewan.

