

PTFE EXPANSION JOINTS

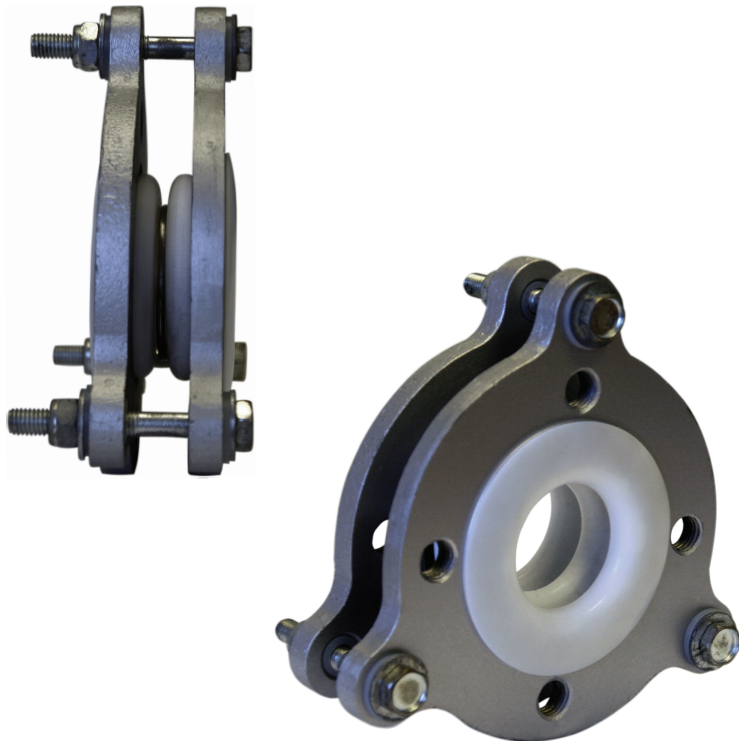
Constructed of molded PTFE, these joints provide exceptional corrosion resistance and accommodate for varying degrees of misalignment, axial travel and angular deflection within the system.

ADVANTAGES

- Chemical resistant characteristics of the PTFE bellows
- Easy installation due to the short face-to-face dimension
- Integral steel limit control bolts
- Convolute design reduces vibration
- Compensates for axial and lateral motion
- Corrosion resistant

APPLICATIONS

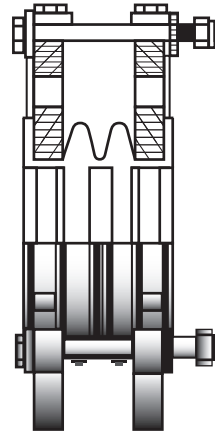
- Piping Systems
- HVAC Installations
- Corrosive Applications
- Chemical and Petrochemical Industries



SIZES

Available in 2, 3, and 5 convolutions

T2

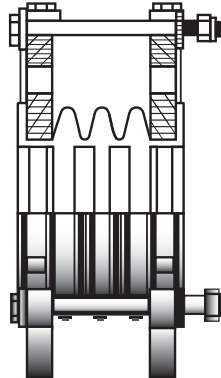


Available in 1" I.D. - 12" I.D.

Axial movement $\frac{1}{4}" - \frac{1}{2}"$

Lateral movement $\frac{1}{8}" - \frac{1}{4}"$

T3

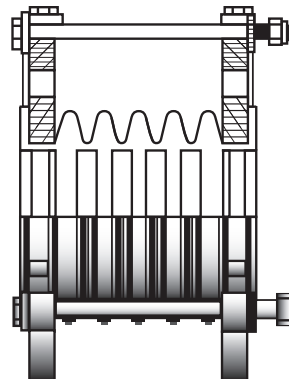


Available in 1" I.D. - 12" I.D.

Axial movement $\frac{1}{2}" - 1\frac{3}{16}"$

Lateral movement $\frac{1}{8}" - \frac{1}{4}"$

T5



Available in 1" I.D. - 8" I.D.

Axial movement $\frac{1}{2}" - 1\frac{1}{4}"$

Lateral movement $\frac{1}{2}" - \frac{5}{8}"$