

# INDUSTRIAL DIVISION

## TCH SOLUTIONS FOR SUCCESS

We carry products to service a wide range of industries.

### PRODUCTS

### ADVANTAGES

- ASME B31.3 fabricated available
- In-house oxygen cleaning is available
- 38+ year trusted reputation in the metal hose industry
- TCH metal hose assemblies are fabricated domestically and meet the Buy American Act. All assemblies are thoroughly leak tested for quality.
- UL Classified for water quality assemblies are available (V, U, and straight connectors only)
- Large inventory of materials in-stock, ready to ship assemblies
- An average of 12,000 assemblies manufactured per month
- Dedicated sales and customer service team with experience in industrial markets

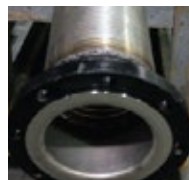
- Flexible Braided Metal Hose Connectors
- Expansion Joints (Rubber and Metal)
- Exhaust Products
- Steam Traced Hose
- Steam Jacketed Hose
- Cryogenic and LPG
- Custom and Stock Applications
- Interlock Hose
- Dry Bulk Conveying Hose
- PTFE Hose and Expansion Joints
- Clamps and End Fittings



### APPLICATIONS



- OEM
- Refineries
- Steel Mills
- Paper Mills
- Steam Lines
- Power Plants
- Waste Water Treatment
- Commercial Food Service
- Petroleum and Chemical Plants
- Food and Drink Processing Plants
- Many Other Applications



# INDUSTRIAL DIVISION

## CUSTOM FABRICATION

### INDUSTRIAL PRODUCT SOLUTIONS FOR



- High Pressure
- High Temperature
- Random Motion
- Thermal Growth
- Corrosive Media
- Vibration Isolation
- Seismic Movement



### METAL HOSE

**In-Stock, Ready to Ship!**

**Sizes:** ¼" I.D. - 24" I.D.

\* Custom sizes available



### RUBBER EXPANSION JOINTS

**Sizes:** ¾" I.D. - 30" I.D.

- Temperatures 20°F to 250°F
- Molded and Spool Type

\* Custom sizes and materials available



### METAL EXPANSION JOINTS

**Sizes:** 2" I.D. - 36" I.D.

**Material:** 304, 321, and 316

Liners and Covers are available

\* Custom sizes and materials available



### V AND U EXPANSION JOINTS

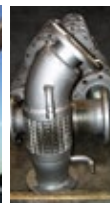
**Sizes:** Standard ½" I.D. - 18" I.D.

**Material:** Stainless Steel Hose and Braid, or Bronze Hose and Braid

\* Custom sizes and fittings available



Ports and hangers available



- Product cleaning is available
- Large inventory of materials
- Fabrications and welding completed at TCH
- All custom parts and products are 100% leak tested



### Delivery:

- Fast Lead Times
- Next Day Air Delivery