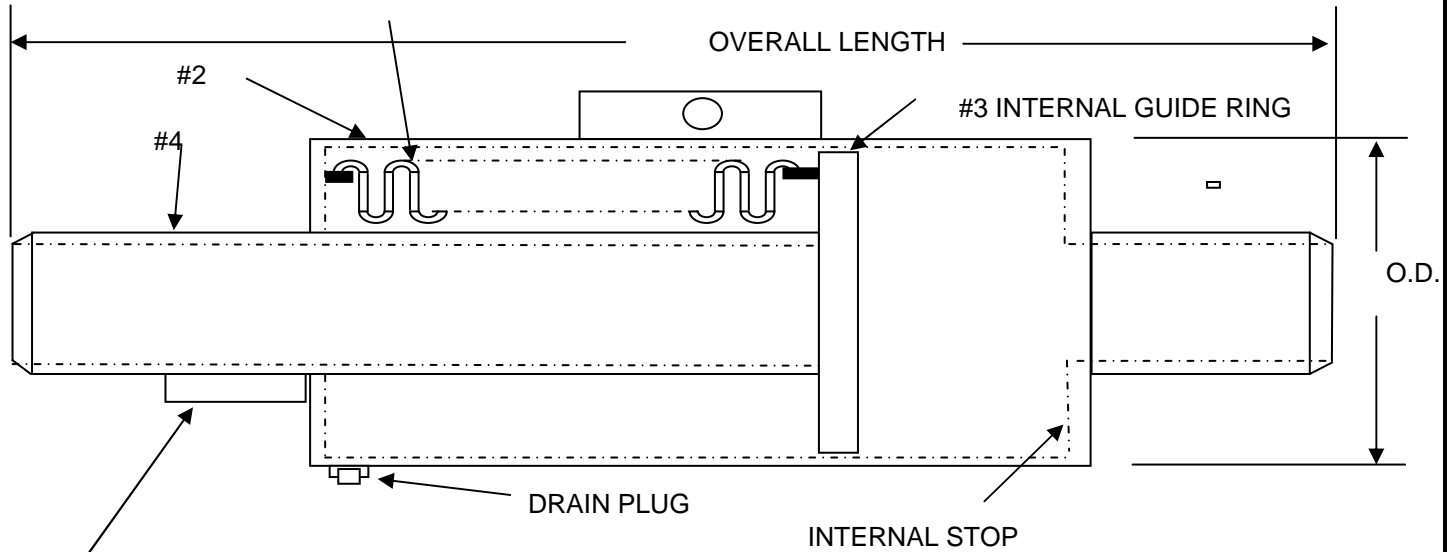




TFEP(4)

#1 MULTI-PLY A240-T304 BELLOWS



SHIPPING BAR REMOVE AFTER INSTALLATION

NOTE:
FOR PROPER OPERATION ALL PIPING MUST BE PROPERLY ANCHORED AND GUIDED

CONSTRUCTION		
P/N#	DESCRIPTION	MATERIALS
1	BELLOWS	3-PLY-A240-304
2	PIPE	A-53/106 C.S.
3	GUIDE RING	A285-GR. C
4	WELD END	A-53/106 C.S.

QTY	SIZE	OVERALL LENGTH	MAX PSIG	AXIAL COMP.	AXIAL EXT.	OUTSIDE DIAMETER	EFFECTIVE AREA IN.SQ.	WEIGHT (LBS.)
	2"	30"	300	4"	3/4"	6-5/8"	16	65
	2-1/2"	30"	300	4"	3/4"	6-5/8"	16	72
	3"	30"	300	4"	3/4"	6-5/8"	16	80
	4"	30"	300	4"	3/4"	8-5/8"	35	134
	5"	30"	300	4"	3/4"	10-3/4"	35	143
	6"	30"	300	4"	3/4"	10-3/4"	54	154
	8"	32"	300	4"	3/4"	12-3/4"	88	285
	10"	32"	300	4"	3/4"	14"	118	307
	12"	32"	300	4"	3/4"	16"	163	380

NOTE: PRESSURE THRUST= EFFECTIVE AREA X THE MAXIMUM WORKING PRESSURE.

CUSTOMER:	
PROJECT:	
ENGINEER:	
PO#:	

TWIN CITY HOSE, INC 20615 COMMERCE BLVD. ROGERS, MN 55374