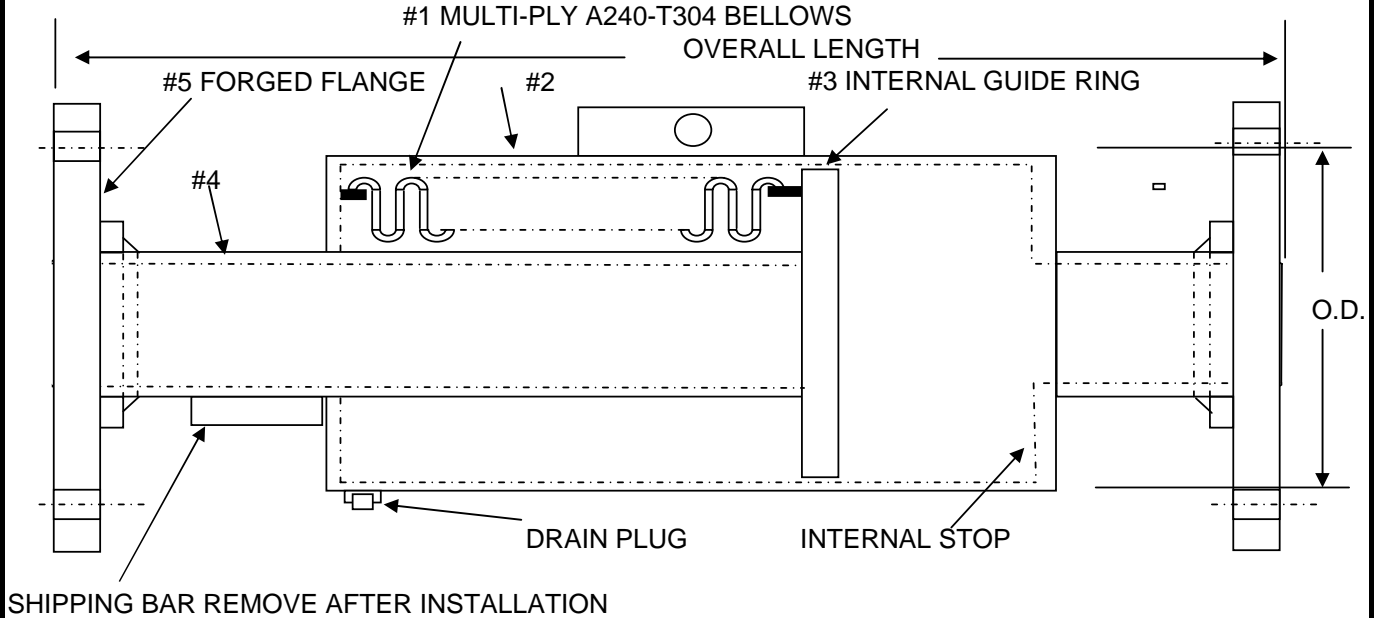




TFEPF(8)



NOTE:
FOR PROPER OPERATION ALL PIPING MUST BE PROPERLY ANCHORED AND GUIDED

CONSTRUCTION		
P/N#	DESCRIPTION	MATERIALS
1	BELLOWS	3-PLY-A240-304
2	PIPE	A-53/106 C.S.
3	GUIDE RING	A285-GR. C
4	WELD END	A-53/106 C.S.
5	FLANGE	150# B16.5 C.S.

QTY	SIZE	OVERALL LENGTH	MAX PSIG	AXIAL COMP.	AXIAL EXT.	OUTSIDE DIAMETER	EFFECTIVE AREA IN.SQ.	WEIGHT (LBS.)
	2-1/2"	51"	300	8"	1-1/2"	6-5/8"	16	109
	3"	51"	300	8"	1-1/2"	6-5/8"	35	113
	4"	51"	300	8"	1-1/2"	10-3/4"	35	240
	5"	51"	300	8"	1-1/2"	10-3/4"	54	265
	6"	51"	300	8"	1-1/2"	12-3/4"	88	280
	8"	53"	300	8"	1-1/2"	14-1/2"	118	505
	10"	53"	300	8"	1-1/2"	14"	163	560
	12"	53"	300	8"	1-1/2"	16"	163	710

NOTE: PRESSURE THRUST= EFFECTIVE AREA X THE MAXIMUM WORKING PRESSURE.

CUSTOMER:	
PROJECT:	
ENGINEER:	
PO#:	

TWIN CITY HOSE, INC 20615 COMMERCE BLVD. ROGERS, MN 55374