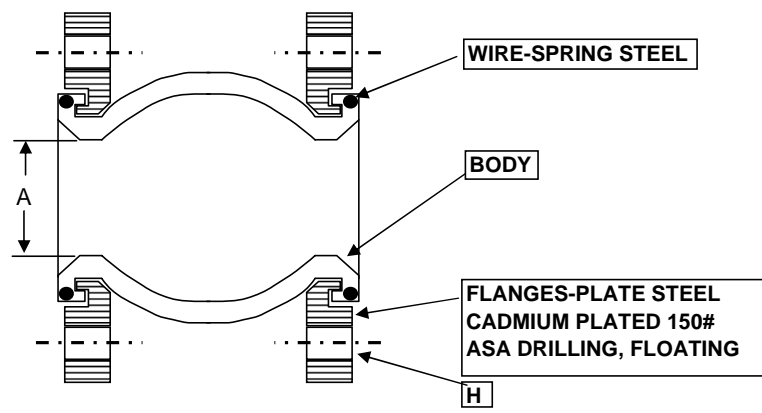




# MS1



CONTROL UNITS/ UNANCHORED SYSTEMS  
 \*CONTROL UNITS MUST BE INSTALLED WHEN PRESSURES EXCEED RATING BELOW.(DESIGN-OPERATING-TEST OR SURGE)

PIPE SIZE	MSS P.S.I.G.
1"- 4"	180
5"- 10"	135
12"-14"	90
16"-24"	45

BODY CONSTRUCTION:	MAXIMUM TEMPERATURE
NEOPRENE NYLON	<input type="checkbox"/> 230 DEGREES F.
EPDM NYLON	<input type="checkbox"/> 250 DEGREES F
BUTYL NYLON	<input type="checkbox"/> 250 DEGREES F
NITRILE NYLON	<input type="checkbox"/> 230 DEGREES F.

QTY	MODEL NUMBER	A NOMINAL SIZE	L FACE TO FACE	APPROX. WEIGHT (LB.)	H NO. OF HOLES	SIZE	LATERAL DEFLECT	AXIAL EXT.	AXIAL COMP.	ANGULAR	WRK. PRESS
	MS1-1-1/2	1-1/2"	6"	7	4	1/2"	(+/- 1/2")	3/8"	1/2"	27	225
	MS1-2	2"	6"	9	4	5/8"	(+/- 1/2")	3/8"	1/2"	20	225
	MS1-2-1/2	2-1/2"	6"	13	4	5/8"	(+/- 1/2")	3/8"	1/2"	17	225
	MS1-3	3"	6"	14	4	5/8"	(+/- 1/2")	3/8"	1/2"	14	225
	MS1-4	4"	6"	19	8	5/8"	(+/- 1/2")	1/2"	3/4"	14	225
	MS1-5	5"	6"	23	8	3/4"	(+/- 1/2")	1/2"	3/4"	11	225
	MS1-6	6"	6"	27	8	3/4"	(+/- 1/2")	1/2"	3/4"	9	225
	MS1-8	8"	6"	41	8	3/4"	(+/- 1/2")	1/2"	3/4"	7	225
	MS1-10	10"	8"	57	12	7/8"	(+/- 3/4")	3/4"	1"	7	225
	MS1-12	12"	8"	83	12	7/8"	(+/- 3/4")	3/4"	1"	6	225
	MS1-14	14"	8"	115	12	1"	(+/- 3/4")	3/4"	1"	5	150
	MS1-16	16"	8"	165	16	1"	(+/- 3/4")	3/4"	1"	4	125
	MS1-18	18"	8"	168	16	1-1/8"	(+/- 3/4")	3/4"	1"	4	125
	MS1-20	20"	8"	170	20	1-1/8"	(+/- 3/4")	3/4"	1"	3	125
	MS1-24	24"	10"	255	20	1-1/4"	(+/- 3/4")	3/4"	1"	3	110

<b>CUSTOMER:</b>		<b>DESIGN DATA:</b> 1) MAX NEGATIVE PRESSURE. 26" HG VACUUM 2)TEMPERATURE RANGE: 20F-300F 3)LISTED MOVEMENTS CANNOT OCCUR SIMULTANEOUSLY
<b>PROJECT:</b>		
<b>ENGINEER:</b>		
<b>PO#:</b>		

TWIN CITY HOSE, INC 20615 COMMERCE BLVD. ROGERS, MN 55374

Phone 800-670-9475 Fax 763-428-5111 www.twincityhose.com