



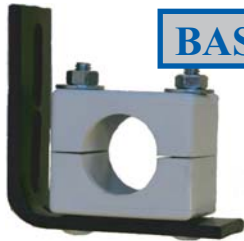
PIPE GUIDES & SLIDES

Pipe guides are needed to facilitate the thermal expansion of a pipeline so that the movement is properly directed to the expansion joint. Guides are designed to prevent buckling or squirming of the pipe. Proper guiding and anchoring are essential to the proper installation of expansion joints.



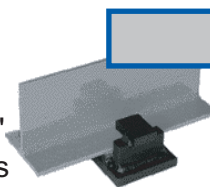
SPIDER PIPE GUIDES

- Available in 1/2" through 24" pipe diameters
- Axial movement 4", 8" & 12"
- Protection for expansion joints, piping system and vital equipment from shearing and lateral forces
- Pre-insulated guides are available



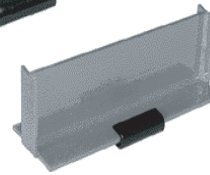
BASEBOARD GUIDES

- Available in 3/4", 1" & 1-1/4"
- For copper tube applications



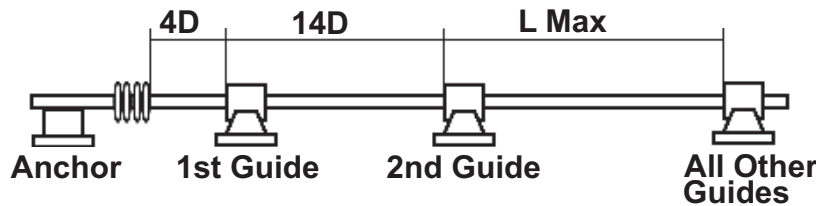
PIPE SLIDES

- Available in 1" through 24" pipe diameters
- Maintenance free
- Eliminate the need for pipe rollers & saddle supports



Pipe guides are always recommended in applications involving pipe movement.

Pipe Guide Spacing



Pipe Size	Expansion Joint to First Guide	First to Second Guide	Maximum Distance Between Intermediate Guide (ft.) For Pressures (psig) Shown Below				
			50	100	150	200	250
3"	1'	3.5'	33'	24'	21'	19'	17'
4"	1.25'	4.75'	45'	33'	27'	25'	23'
5"	1.75'	5.75'	53'	41'	34'	31'	27'
6"	2'	7'	60'	43'	37'	33'	31'
8"	2.75'	9.25'	75'	56'	47'	43'	39'
10"	3.25'	11.75'	94'	70'	60'	53'	47'
12"	4'	14'	104'	77'	65'	57'	53'

